

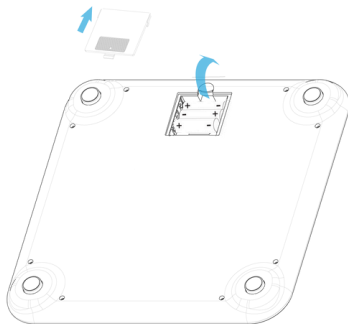
Quickstart Guide

Tenovi Scale



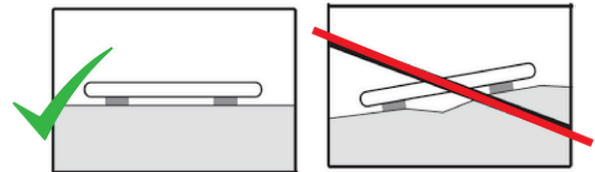
Step ONE:

Open the lid on the back of the scale.
Pull the plastic tab to activate the batteries.



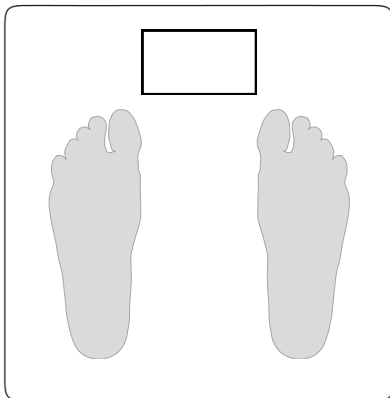
Step TWO:

Place the scale on a hard, even surface.



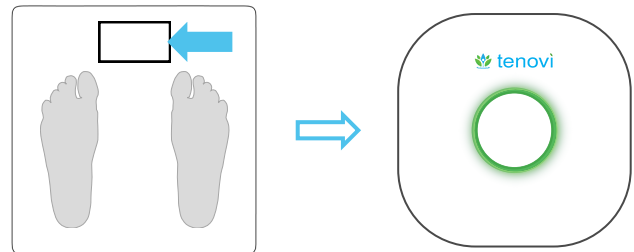
Step THREE:

Take a reading. Step on the device and remain still.



Step FOUR:

The measurement will flash when it is captured. Wait for the Hub to beep, and then step off the scale.



For further assistance, please contact your care team.

Read the device manufacturer instructions for operation and safety before use.

Step FIVE:

The Hub will turn YELLOW when a reading is being taken, and turn GREEN when the reading is transmitted successfully.



YELLOW:
a reading is
being taken



GREEN:
the reading is
transmitted
successfully.



For further assistance, please contact your care team.

Read the device manufacturer instructions for operation and safety before use.