

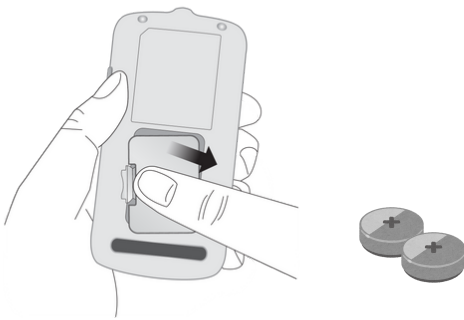
Quickstart Guide

Tenovi Glucose Meter



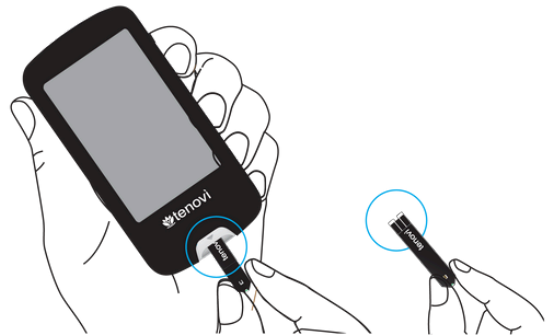
Step ONE:

Open the lid on the back of the glucose meter. Insert the coin batteries.



Step TWO:

Insert the test strip fork side up to turn the device on.



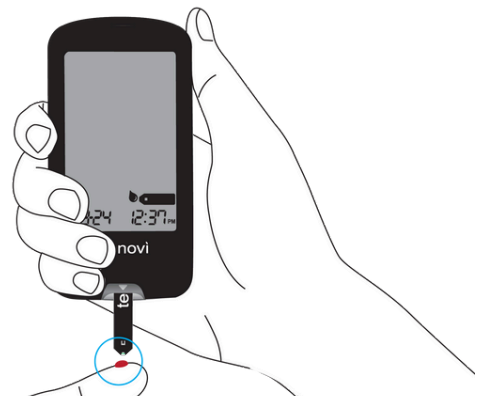
Step THREE:

The blood drop on the screen indicates the device is ready to take a reading.



Step FOUR:

Apply the blood to the narrow end of the test strip.



For further assistance, please contact your care team.



Read the device manufacturer instructions for operation and safety before use.

Step FIVE:

The device will count down from 5.

**Step SIX:**

Your reading will be displayed.

**Step SEVEN:**

Remove the test strip to send the reading to the Hub. The Hub should beep when the reading is captured.

**Step EIGHT:**

The Hub will turn YELLOW when a reading is being taken, and turn GREEN when the reading is transmitted successfully.



YELLOW:
a reading is
being taken



GREEN:
the reading is
transmitted
successfully.



For further assistance, please contact your care team.

Read the device manufacturer instructions for operation and safety before use.